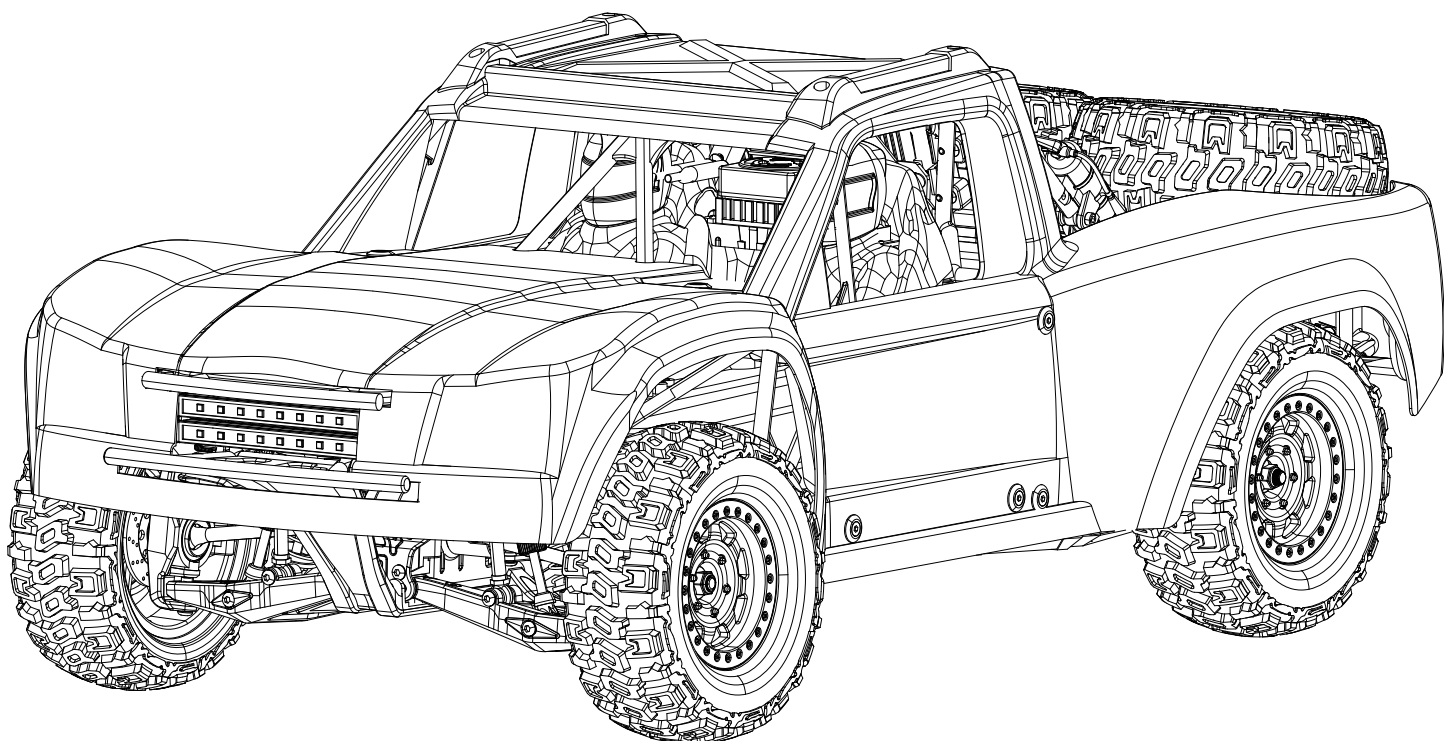


1:10

4x4

**2.4
GHZ**

14+
AGES



OPERATING INSTRUCTIONS



TABLE OF CONTENTS



WARNING & PRECAUTION & POLICY STATEMENT **04**

PAGE

01 Important Notice	04
02 Warning Statement	04
03 Use Sequential	04
04 Attention Statement	05
05 Battery Safety Statement	05
06 WEEE Compliance	05
07 FCC Note	06

PAGE

07 VEHICLE SPECIFICATION

07	01 Vehicle data
07	02 Electronic system spec.
07	03 Transmission system spec.
07	04 Structure system spec.



QUICK START **07**

PAGE

Step 1 - Install the model batteries	07
Step 2 - Install the transmitter batteries	08
Step 3 - Power on transmitter & ESC for frequency pairing	08
Step 4 - Power OFF the ESC & transmitter	08
Step 5 - Product maintenance	09



ESC, RECEIVER & TRANSMITTER INSTRUCTIONS **09**

PAGE

01 ESC instructions	
ESC data	09
ESC installation	09
ESC operation tips	09
02 Receiver instructions	
Receiver data	10
Receiver installation	10
03 Light board instructions	10
04 Transmitter instructions	
Transmitter data	11
Transmitter functions	11
ST.TRIM	11
ST.D/R	12
CH5, Gyroscope adjustment	12
Reverse Button	12
CH3, Lamp control	12
Power switch/Status lights	13
TH.D/R	13
TH.TRIM	13
CH2, Throttle trigger	13
CH1, Steering wheel	13

PAGE

14 BUYABLE ACCESSORIES LIST

14	01 Plastic parts & hardware
15	02 Electronic devices
15	03 Screw type



PAGE

16 TROUBLE SHOOTING



PAGE

33 EXPLOSION VIEW





01 - WARNING & PRECAUTION & POLICY STATEMENT

Remark: Including Section 01-01 to 01-07.

01-01 IMPORTANT NOTICE

- (1) The package or instruction manual contains important information and must be **RETAINED**.
- (2) Our company's products are improving all the time, design and specifications are subject to change without notice. All the information in this manual has been carefully checked to ensure accuracy, if any printing errors, our company reserves the final interpretation right.
- (3) The spare parts (including batteries and chargers) mentioned in the User Manual are subject to sales. KIT version not included electronic component. Configurations vary by version, please refer to the sales version.
- (4) Failure to follow these instructions (including PART 01, and others) may result in injury to yourself or others. You may also cause property damage or model damage.
- (5) For more safety precautions, please refer to the "Disclaimer and Safety Operation Guidelines".
- (6) Usage: Please follow the instructions to install and operate the model.

01-02 WARNING STATEMENT

Warning:

The product should only be used by adults and children over 14 years.
Adult supervision is required for children under 14 years.

Hinweis:

Dieses Produkt ist für die Erwachsene und die Kinder ab 14 Jahren.
Die Kinder unter 14 Jahren müssen von Erwachsenen beaufsichtigt werden.

Avertissement:

Ce produit est destiné aux adultes et aux enfants de plus de 14 ans.
Les enfants de moins de 14 ans doivent être surveillés par des adultes.

Avvertimento:

Questo prodotto è destinato all'uso per i adulti e bambini di età superiore ai 14 anni.
I bambini di età inferiore ai 14 anni devono essere sorvegliati da un adulto.

Advertencia:

Este producto es para adultos y niños mayores de 14 años.
Los niños menores de 14 años deben ser supervisados por adultos.

警告: この製品は、大人と14歳以上の子供には使用対象です。

14歳未満の子供は大人の監視が必要です。

. ويحتاج الأطفال دون سن الرابعة عشره إلى رعاية البالغين

تحذير : هذا المنتج يستخدم فقط من قبل البالغين والأطفال فوق سن 14



DANGER!
Only suitable
for age 14+



WARNING:

CHOKING HAZARD - Small parts.
Not for children under 3 yrs.
Erstickende Gefahr - Kleine Teile.
Nicht für Kinder unter 3 Jahren.
Danger d'étouffement - petites pièces.
Pas pour les enfants de moins de 3 ans.
Peligro de asfixia - Pequeñas piezas.
No para niños menores de 3 años.

ليس للأطفال تحت 3 سنوات.
مخاطر الخنق - اجزاء صغيرة.



01-03 USE SEQUENTIAL

Before Operation	<ol style="list-style-type: none"> (1) Read the instruction manual in detail, or ask for the person with experience in operation, and read with the guardian if necessary. (2) Make sure all screws and nuts are properly tightened. (3) The transmitter and the vehicle should always use the battery with saturated power to avoid losing control of the model. (4) Please make sure that the throttle trigger is in the center position.
During Operation	<ol style="list-style-type: none"> (1) First turn on the power of the transmitter, and then turn on the power of the model. (2) Use this product only in open areas (>5x5m) without pedestrians. (3) DO NOT put fingers or any objects inside rotating and moving parts.
After Operation	<ol style="list-style-type: none"> (1) First turn off the model power, then turn off the transmitter's power, and take out the all battery. (2) Daily maintenance is required after the model is used.

01-04 ATTENTION STATEMENT

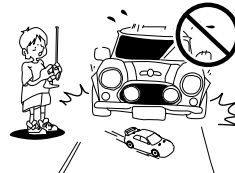
- (1) The model must stop immediately and check for the reasons when it is operating abnormal.
- (2) Keep in mind that people around you may also operate a radio control model.
- (3) The motor is a heating part, please do not touch it.
- (4) If you don't use the model for a long time, please raise the chassis to let the wheels hang in the air.
- (5) Please use this product only in empty place! It is strictly forbidden to use it on roads, living area, parks, indoor areas, children or places where people gather, otherwise injury may occur.



The product contains small and sharp parts. Keep away from children.



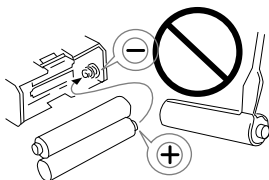
Be sure to read the instruction manual in detail, or ask for the person with experience in operation, and read with the guardian if necessary.



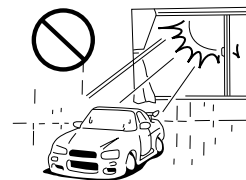
DO NOT operate in public streets or crowded places to avoid accidents.



Cutters, nippers and screw drivers need careful handling.



Please don't reverse contact or disassemble the battery, as this way will cause the battery to explode.



DO NOT put the model in high temperature, humidity and direct sunlight.

01-05 BATTERY SAFETY STATEMENT

- Please read and observe all precautions before use. Improper use of battery may cause danger.
- It is normal for the battery to heat up after operation. Please be careful when handling the battery. If the wire is worn, it is easy to short circuit and cause fire.

- 1) Pay attention to the polarity of the battery when installing or replacing the battery;
- 2) Different types of batteries or old and new batteries should not be mixed;
- 3) After use, please disconnect the power supply and pull out the plug;
- 4) DO NOT charge the battery when it is bulging or expanding;
- 5) Keep away from damp, corrosive environment and heat source;
- 6) DO NOT short circuit, decompose or put the battery into fire;
- 7) Please use the attached special charger to charge the battery;
- 8) Please charge the battery under adult supervision;
- 9) Remove the battery from the model before charging;
- 10) DO NOT short circuit any terminals.



**WARNING
FIRE HAZARD!**



Li-Po Battery Disposal & Recycling

Wasted Lithium-Polymer batteries must not be placed with household trash. Please contact local environmental or waste agency or the supplier of your model or your nearest Li-Po battery recycling center.



01-06 WEEE COMPLIANCE

Please help the environment by disposing of your product responsibly at the end of its life. The wheeled bin symbol indicates that this product should not be disposed of in your household waste containers. Instead, the product should be disposed of by using a designated collection point for the recycling of waste electrical and electronic equipment. The Waste of Electrical and Electronic Equipment (WEEE) Directive (2002/96/EC) requires that the best available recycling techniques be employed to minimize the impact on the environment.

Recycling electronics helps by keeping harmful chemicals out of the environment, and also saves money by reusing precious metals. Remove any batteries and dispose of them and the product at your local authority's recycling facility. For more information about where you can drop off your waste equipment for recycling, please contact your local city office your household waste disposal service, or the location where you purchased this product.



This equipment has been tested and found to comply with the limits for a Class B digital device, pursuant to Part 15 of the FCC Rules. These limits are designed to provide reasonable protection against harmful interference in a residential installation. This equipment generates uses and can radiate radio frequency energy and, if not installed and used in accordance with the instructions, may cause harmful interference to radio communications. However, there is no guarantee that interference will not occur in a particular installation. If this equipment does cause harmful interference to radio or television reception, which can be determined by turning the equipment off and on, the user is encouraged to try to correct the interference by one or more of the following measures:

- Reorient or relocate the receiving antenna.
- Increase the separation between the equipment and receiver.
- Connect the equipment into an outlet on a circuit different from that to which the receiver is connected.

WARNING: Changes or modifications not expressly approved by the party responsible for compliance could void the user's authority to operate the equipment.

FCC Notice

The equipment may generate or use radio frequency energy. Changes or modifications to this equipment may cause harmful interference unless the modifications are expressly approved in the instruction manual. Modifications not authorized by the manufacturer may void user's authority to operate this device.

This device complies with Part 15 of the FCC Rules. Operation is subject to the following two conditions: (1) this device may not cause harmful interference, and (2) this device must accept any interference received, including interference that may cause undesired operation.

FCC Radiation Exposure Statement

The device has been evaluated to meet general RF exposure requirement.
The device can be used in portable exposure condition with out restriction.





02 - VEHICLE SPECIFICATION

Remark: Including Section 02-01 to 02-04.

02-01 VEHICLE DATA

Vehicle Scale	1:10
Vehicle Size	L600×W300×H250mm
Wheelbase	345mm
Ground Clearance	About 56mm
Battery Compartment Size	L140×W30×H45mm
Wheel Size	ø115.8×44.9mm

02-02 ELECTRONIC SYSTEM SPEC.

Motor	3660 Brushless Motor
ESC	Refer to "Section 04-01".
Receiver	Refer to "Section 04-02".
Steering Servo	3 wires, 35kg copper gear digital servo
Transmitter	Refer to "Section 04-04".

02-03 TRANSMISSION SYSTEM SPEC.

Pinion Gear	0.8M 15T (Assembled on the Motor Shaft)
Spur Gear	0.8M 58T (Assembled on the center differential)
Input Gear	1M 13T (Assembled on the central drive shaft)
Differential Gear	1M 37T
Sun Gear	0.8M 20T
Planet Gear	0.8M 10T

02-04 STRUCTURE SYSTEM SPEC.

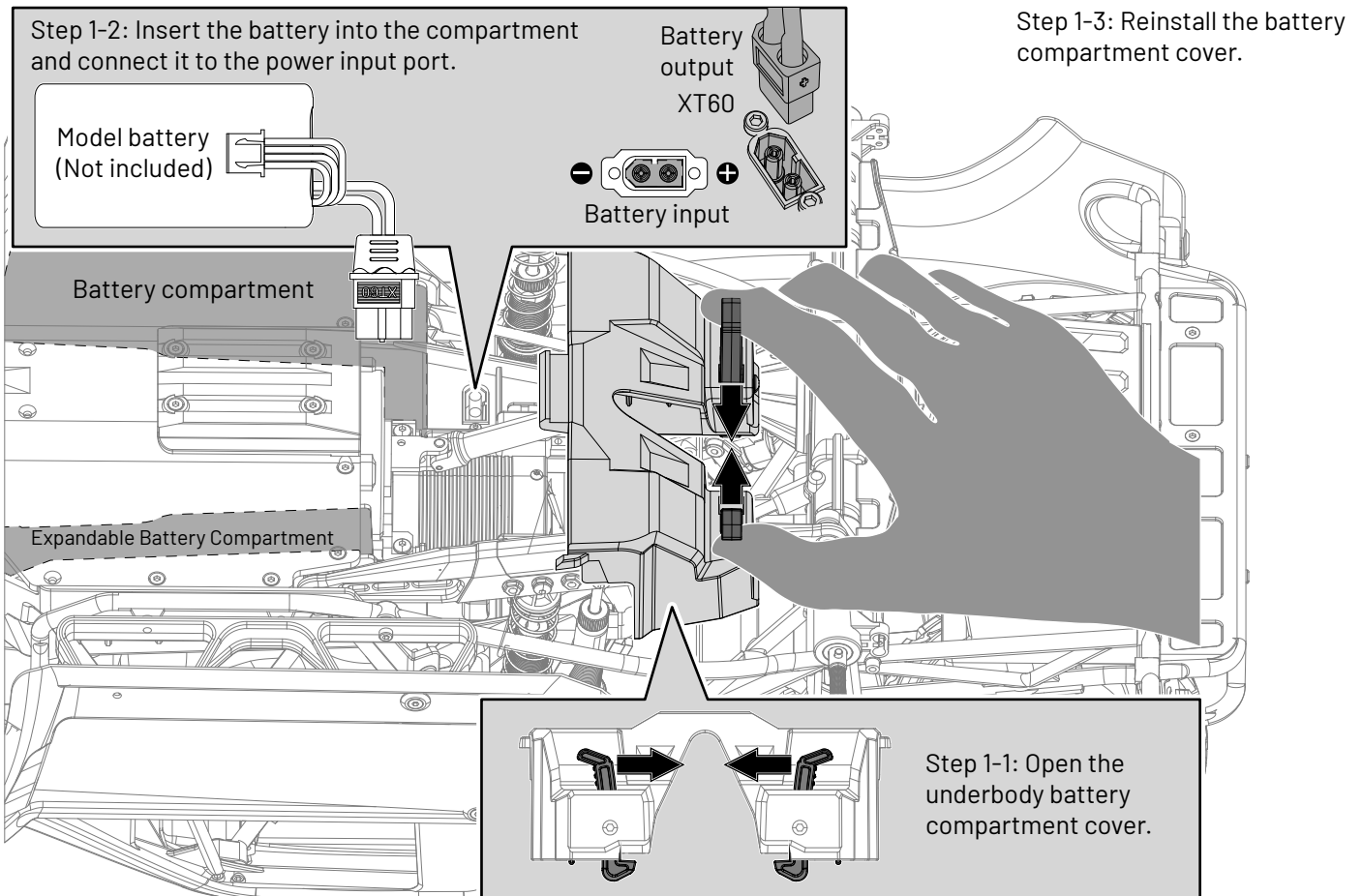
Truck Body	PC
Chassis	Aluminum Alloy
Automotive Plastic Parts	High-quality Nylon
Shock Absorber	Metal-housed oil buffer
Wheel Hex	Metal
Central Gearbox	Metal

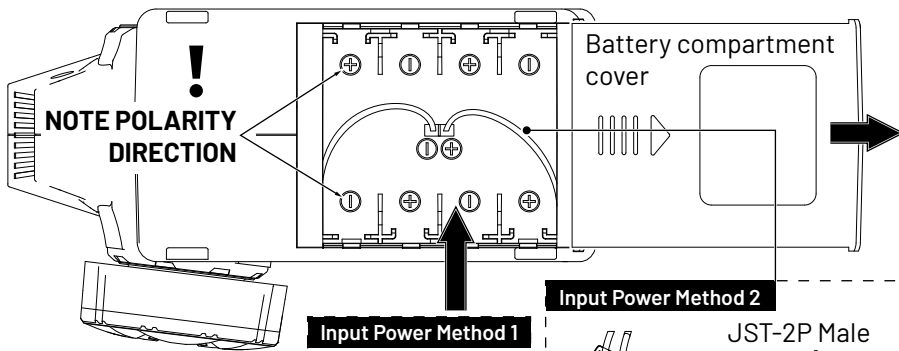


03 - QUICK START

Remark: Including Section 03-01 to 03-05.

03-01 STEP 1 - INSTALL THE MODEL BATTERIES

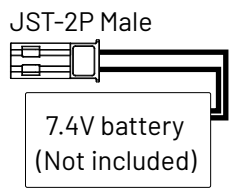
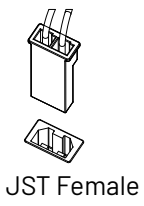
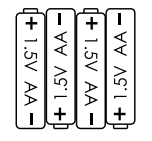


03-02**STEP 2 - INSTALL THE TRANSMITTER BATTERIES**

- ① Push in the direction shown to remove the battery compartment cover.
- ② Insert the required battery.
- ③ Reinstall the battery compartment cover.

Input Power Method 1**Input Power Method 2**

The male JST connector is pre-inserted; do not disconnect it. Insert four 1.5V AA batteries (Not included).

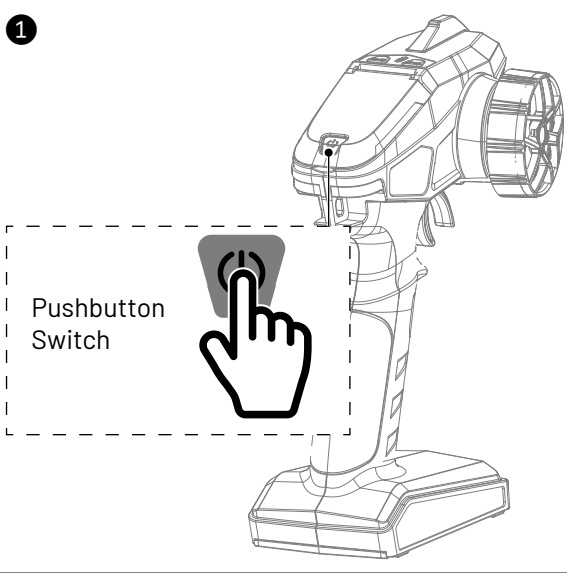
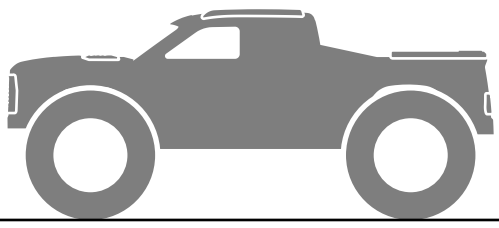
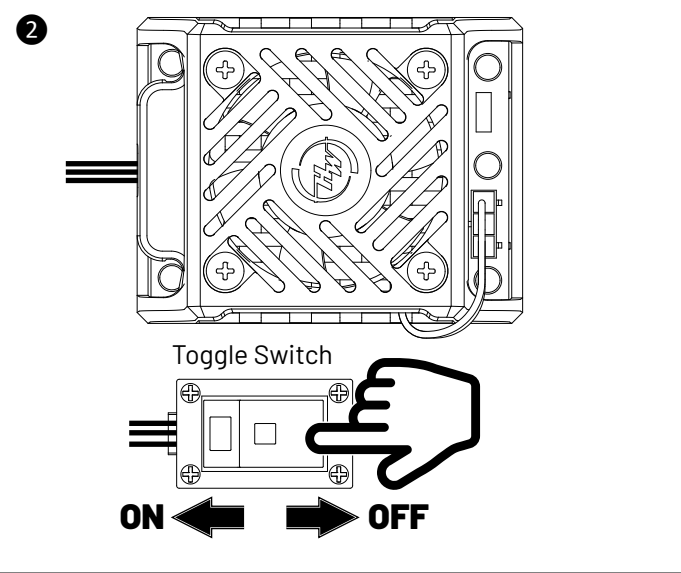


- ① Disconnect the male JST connector.
- ② Insert a 7.4V lithium battery with male JST-2P connector (Not included).

Battery compartment capacity: 58×40×14mm

03-03**STEP 3 - POWER ON TRANSMITTER & ESC FOR FREQUENCY PAIRING**

- (1) Always turn on the transmitter power first, then turn on the ESC power.
- (2) The devices will automatically bind. All lights will remain steadily illuminated, indicating successful binding. During the binding process, the vehicle lights will blink rapidly—this indicates the gyro is performing automatic calibration. You must place the vehicle on a level surface to complete this operation. After calibration is complete, the vehicle lights will return to their normal state. Otherwise, binding has failed and must be reattempted. Please refer to Section 04-02-02.

Always power on your transmitter first**And then power on the ESC**

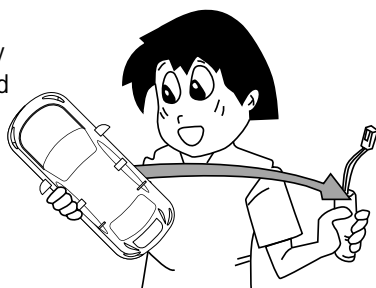
You can play now!

Place the object stationary on level ground.

03-04**STEP 4 - POWER OFF THE ESC & TRANSMITTER**

- (1) First, turn off the vehicle's ESC power and remove the battery. Open the battery compartment cover and refer to "Section 03-01".
- (2) Second, turn off the transmitter power and remove the battery. Open the Battery compartment cover and refer to "Section 03-02".
- (3) **IMPORTANT:** Always power OFF the ESC before the transmitter.

When not in use, remove the battery from the model and transmitter.



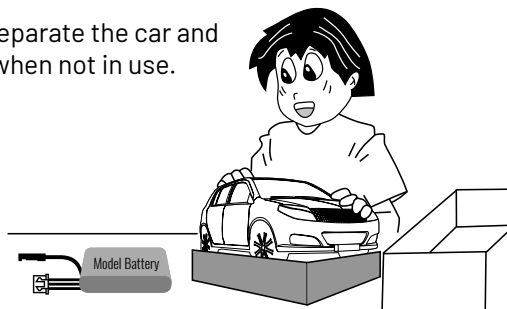
Please remove the sediment and dirt on the car completely and must be kept dry after play.



Apply lubricating oil to external metal parts.



Please separate the car and battery when not in use.



04 - ESC / RECEIVER / LIGHT BOARD / TRANSMITTER INSTRUCTIONS

Remark: Including Section 04-01 to 04-04.

04-01 ESC INSTRUCTIONS

04-01-01	ESC DATA
Model:	P10-072
RF Standard:	2.4GHz
Input Power:	2-3S (7.4V-11.1V)
Rated current:	60A
Size:	46×36×35mm
Power Connector:	XT60H-M
Motor Limit:	2-3S, LiPo
Motor Connector:	4.0mm banana connector

04-01-02

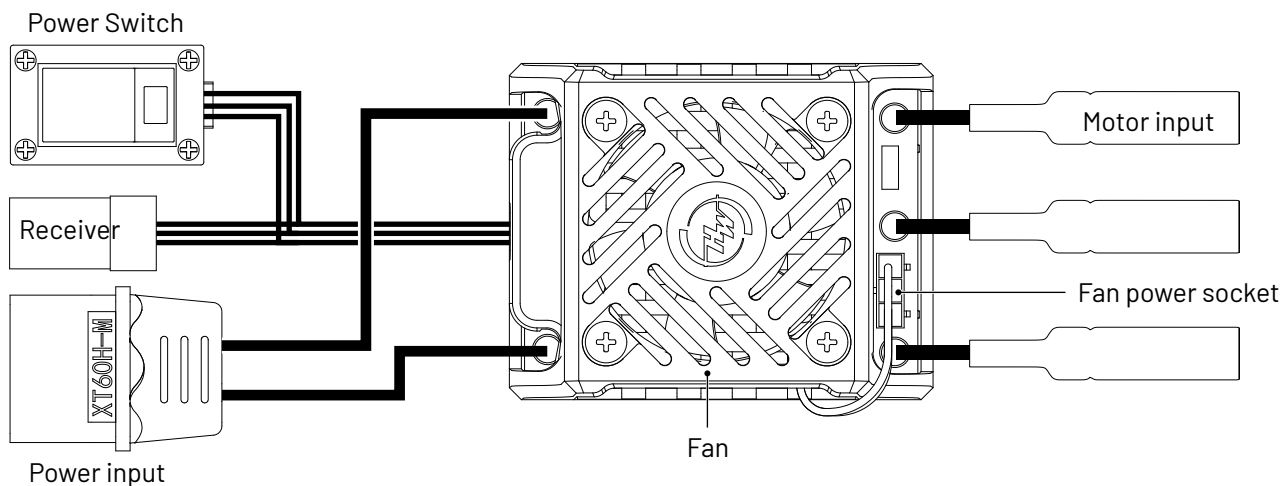
ESC OPERATION TIPS



- (1) When starting to play the vehicle, always power ON your transmitter before the ESC.
- (2) After playing the vehicle, always power OFF the ESC before the transmitter.

04-01-03

ESC INSTALLATION



04-02 RECEIVER INSTRUCTIONS

04-02-01

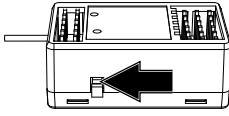
RECEIVER DATA

Model	P10-073
RF Standard	2.4GHz
Input Voltage	4.8-10V
Size	35×21×14mm

04-02-02

RECEIVER INSTALLATION

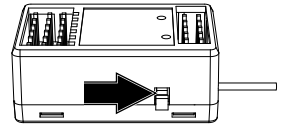
ID matching button



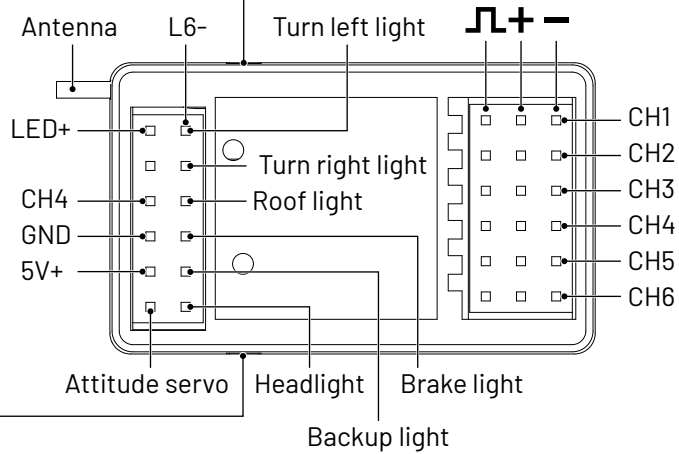
After changing the transmitter

- ① Power on the remote control.
- ② Press and hold the pairing button on the receiver for 3 seconds. The indicator light will flash rapidly, indicating it has entered pairing mode. The receiver will automatically search for the nearest remote control signal.
- ③ When the indicator light becomes steady, the pairing is successful.

Gyroscope mode button

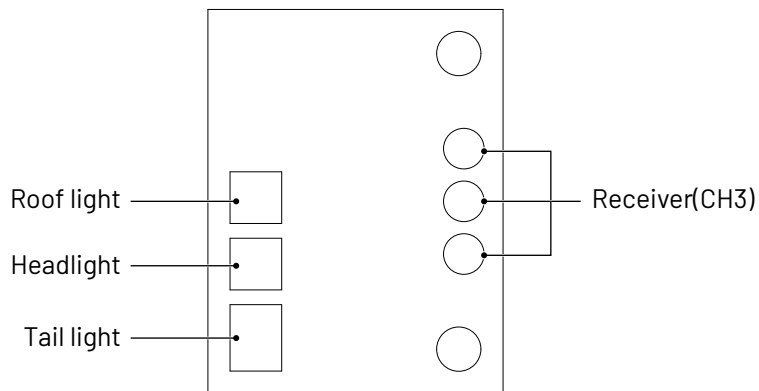


- 1) Press twice to turn the inverter receiver to the direction of the gyroscope of the channel.
- 2) Press 3 times to turn on and off gyroscope sensitivity.



04-03 LIGHT BOARD INSTRUCTIONS

P10-082



04-04 TRANSMITTER INSTRUCTIONS

Before installing and operating your transmitter, please take a few minutes to familiarize yourself with the various features of the system by reading this instruction manual thoroughly.

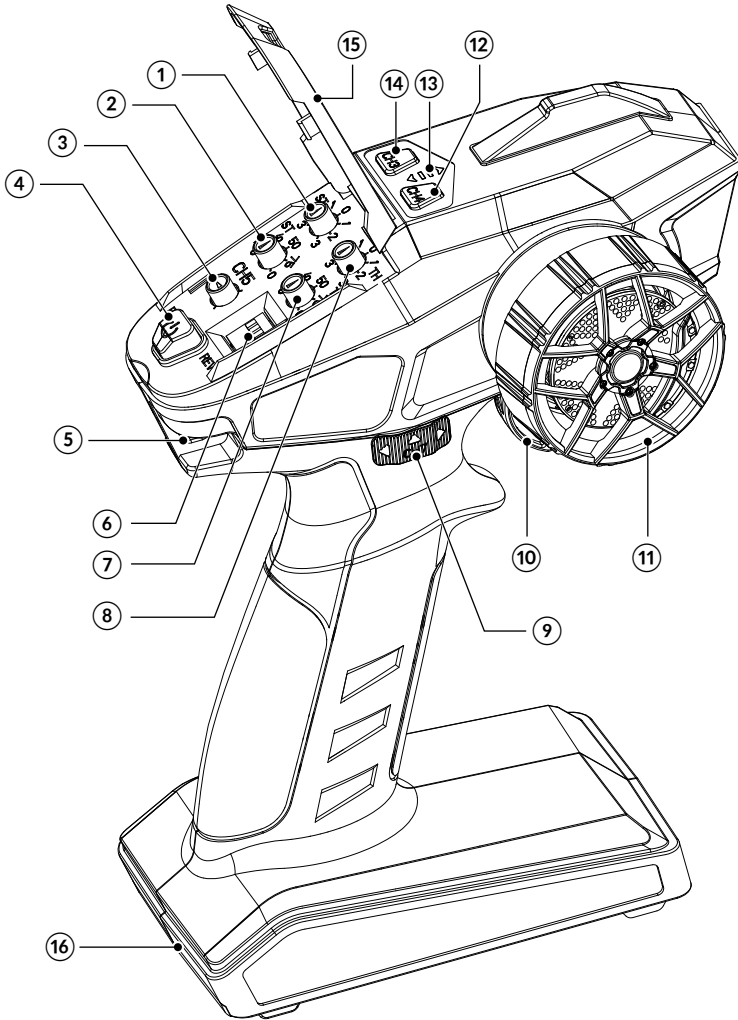
04-04-01

TRANSMITTER DATA

Model	P10-3032
Control Type	Proportional
Frequency Band	2.4GHz
Channels	5
Control Distance	About 100m
Iput Power Method 1	1.5V AA Battery × 4pcs
Iput Power Method 2	7.4V Battery with connector type JST-2P

04-04-02

TRANSMITTER FUNCTIONS



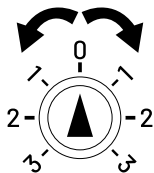
①	ST. TRIM	Steering Trim, refer to "Section 04-04-03".
②	ST. D/R	Steering Dual Rate, refer to "Section 04-04-04".
③	CH5	Gyroscope action ratio adjustment, refer to "Section 04-04-05".
④	Power Switch	Power on / off the transmitter, refer to "Section 04-04-08".
⑤	Lanyard hole	
⑥	Reverse the CH1/CH2 function	Refer to "Section 04-04-08".
⑦	TH. D/R	Refer to "Section 04-04-09".
⑧	TH. TRIM	Refer to "Section 04-04-10".
⑨	CH7	Expansion Channel.
⑩	CH2, Throttle Trigger	Control the vehicle to move forward/backward, refer to "Section 04-04-11".
⑪	CH1, Steering Wheel	Control the vehicle to turn right/left, refer to "Section 04-04-12".
⑫	CH4	Expansion Channel.
⑬	Transmitter Indicator	
⑭	CH3	Lamp control, refer to Section 04-04-07.
	Regulatory Interface Cover	To avoid dust or water splash.
⑯	Battery Cover	Battery installation, refer to "Section 03-02".

04-04-03

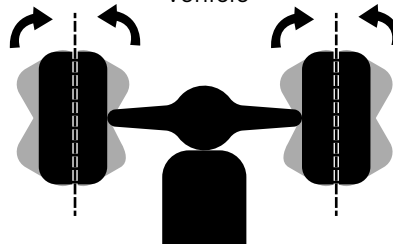
ST. TRIM

Steering Trim: Trim adjustment allows you to finely tune the inputs from your transmitter. It's the dial you reach for when your RC car isn't tracking straight. The steering trim is what helps navigate the RC car in a straight line.

Transmitter



Vehicle



If your vehicle veers to the left or right, dial the Steering Trim knob to the right or left.

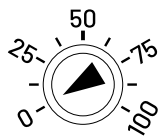
Steering Dual Rate: Steering Dual Rate knob can be set to control the steering throw:

- (1) Turning the knob clockwise to increase the steering throw.
- (2) Turning the knob anticlockwise to reduce the steering throw.

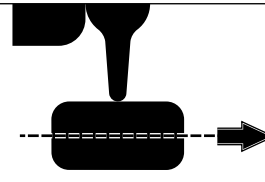
It is recommended to keep the steering input within 75% to prevent excessive steering that may cause friction and wear between the front wheels and the body shell. Maintaining an appropriate steering range ensures better body posture control and enhances driving comfort.

Note: Above are the samples to help the players to under the ST. D/R function.

Sample 1

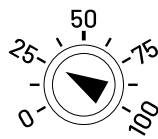


Step 1- Set the ST.D/R knob to "0" position.
Step 2- Dia the steering wheel of transmitter to the end.

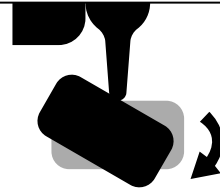


Result: The wheels cannot turn right or left, only can run straight, even you dia the steering wheel to the end.

Sample 2

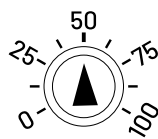


Step 1- Set the ST.D/R knob to "25" position.
Step 2- Dia the steering wheel of transmitter to the end.

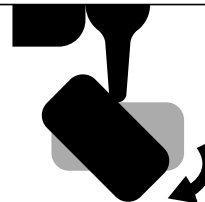


Result: The wheels can turn right or left under 25% steering throw, turn wider than 0%(Sample 1).

Sample 3



Step 1- Set the ST.D/R knob to "50" position.
Step 2- Dia the steering wheel of transmitter to the end.



Result: The wheels can turn right or left under 50% steering throw, turn wider than 25%(Sample 2) and 0%(Sample 1).

The vehicle gyroscope detects motion states based on the conservation of angular momentum, real-time monitoring of Body attitude, Rotational angular velocity, Correcting vehicle posture and direction dynamically. Use the CH5 knob on the Transmitter to adjust the gyroscope's effect ratio and sensitivity:

- (1) Clockwise rotation: Increases the effect ratio (enhances gyroscopic correction force).
- (2) Counterclockwise rotation: Decreases the effect ratio (reduces gyroscopic intervention).

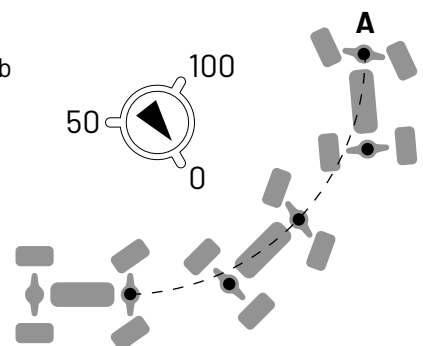
1. Before using the ratio of gyroscope on the transmitter, adjust the Steering Trim so that the vehicle can drive as straight as possible, then turn on the gyro. (If the vehicle's inherent steering neutral point is off-center, turning on the gyro will cause it to constantly work in a correction state during driving, resulting in the vehicle wobbling/swerving left and right continuously.)

2. If the gyro sensitivity is set too high, resulting in excessive correction responsiveness, the vehicle will wobble or oscillate left and right during high-speed runs. In this case, appropriately reduce the gyro sensitivity until the vehicle no longer shakes or wobbles at high speed.

3. The higher the gyro sensitivity, the greater its intervention in steering (resulting in a larger turning radius).

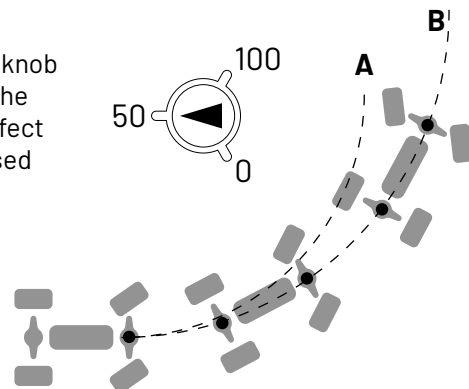
Sample 1

When the CH5 knob is set to "0", the gyroscope's effect ratio is completely disabled.

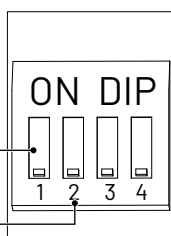


Sample 2

When the CH5 knob is set to "50", the gyroscope's effect ratio is increased



Note: The examples above are provided solely to help players understand the function of adjusting the gyroscope's effect ratio.



Reverse for CH1
Reverse for CH2

After the car lights are properly connected, power on. The lights will remain on and can be controlled via the CH3 button.

- 1) Press to cycle through lighting modes (5 modes total).
- 2) Hold to cycle through light colors (White, Red, Green, Blue, Yellow, Purple, Sky Blue).

04-04-08

POWER SWITCH/STATUS LIGHTS



OFF/ON

Before powering on, ensure the remote's throttle trigger and steering wheel return to neutral position normally. Do not touch the throttle trigger or steering wheel while turning on the remote control. After powering on, the transmitter automatically pairs with the device, indicated by a steadily lit blue indicator.

When battery voltage is low, the indicator alternately lights up and goes out.

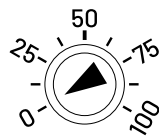
04-04-09

TH. D/R

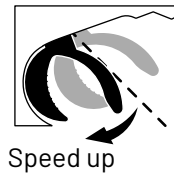
The throttle sensitivity adjustment knob controls throttle response:

- (1) Rotate clockwise to increase sensitivity.
- (2) Rotate counterclockwise to decrease sensitivity.

Sample 1



- ① Set throttle sensitivity knob to "0" position.
- ② Pull throttle to maximum travel extent.

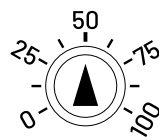


Speed up

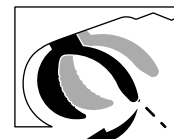


- ③ The vehicle remains stationary.

Sample 2



- ① Set throttle sensitivity knob to "50" position.
- ② Operate throttle to the half-travel position.

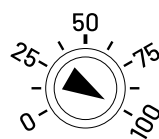


Speed up



- ③ The vehicle advances.

Sample 3



- ① Set throttle sensitivity knob to "100" position.
- ② Gently pull the throttle trigger.



Speed up



- ③ The vehicle advances.

Note: The above three examples can help players understand the throttle control function.

04-04-10

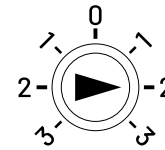
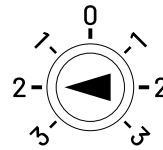
TH. TRIM

Before starting up, it must be set to "0".

Throttle trim allows you to trim the values on the transmitter. It enables the car to cruise automatically at extremely low or extremely fast speeds:

- (1) Turn the knob clockwise and the car will move forward for cruising.
- (2) Turn the knob counterclockwise and the car will move backward for cruising.

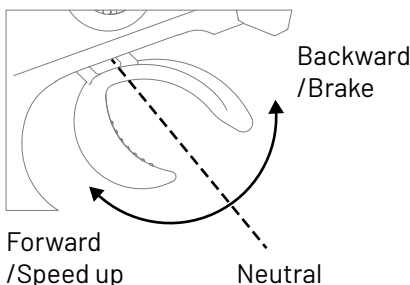
Turn the knob counterclockwise. The car will cruise back. The larger the number, the faster the speed.



Turn the knob clockwise and the car will cruise forward. The larger the number, the faster the speed.

04-04-11

CH2, THROTTLE TRIGGER

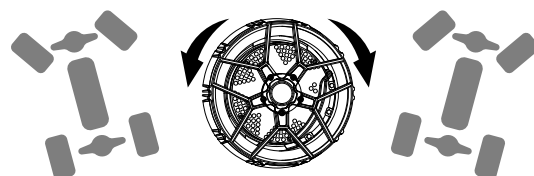
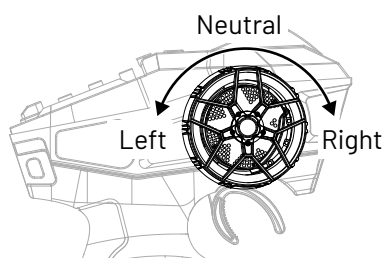


Note:

When using the transmitter in electric powered vehicles, the throttle trigger should always remain in the neutral position. Otherwise the vehicle may suffer erratic operation of the throttle trigger functions.

04-04-12

CH1, STEERING WHEEL





05 - BUYABLE ACCESSORIES LIST

Remark: Including Section 05-01 to 05-03.

05-01 PLASTIC PARTS & HARDWARE

Part#	Name	Part#	Name
P10-001	Chassis	P10-076	Fan cover
P10-002	Battery compartment cover	P10-077	Input Gear
P10-003	Steering servo mount	P10-083	Rear drive shaft
P10-004	Chassis fixed mount	P10-084	Spur Gear
P10-005	Front shock towers (L/R)	P12-052A	Sun Gear
P10-006	Front upper suspension arm (L/R)	P12-053A	Planet Gear
P10-007	Front lower suspension arm (L/R)	P12-063	Differential Gear
P10-008A	Steering blocks (L/R)	P10-085	Front differential drive shaft
P10-009A	Front center driveshaft set	P10-086	Differential case
P10-010	Base plate fixed part	P10-087	Gasket
P10-011	Receiver box		
P10-012	Steering mechanism		
P10-013	Steering link		
P10-014	Servo arm set		
P10-015	Rear axle suspension link		
P10-016	Trailing arm		
P10-017	Brake caliper trim		
P10-018	Front gearbox housing		
P10-019A	Central transmission housing		
P10-020	Rear axle housing		
P10-021	Body washers		
P10-022	Front bumper		
P10-024	Front bumper support		
P10-025	Roll cage part (front)		
P10-026	Roll cage parts (middle)		
P10-030	Main body of roll cage (L/R)		
P10-031	Roll cage parts (rear)		
P10-032	Bumper set (rear)		
P10-033	Luggage rack		
P10-034	Nerf bars		
P10-037B	Body assembly (Red and white)		
P10-037C	Body assembly (Red and blue)		
P10-037-01	Body assembly (Transparent)		
P10-038	Roll cage assembly		
P10-039	Sway bar set (front)		
P10-040B	Sway bar set (rear)		
P10-042D	Wheel		
P10-043A	Front transmission assembly		
P10-044C	Central transmission assembly		
P10-045B	Rear axle assembly		
P10-046B	Shock absorber		
P10-047B	Damper		
P10-051B	Front differential		
P10-052C	Central differential		
P10-053B	Rear differential		
P10-054A	Integrated CVD		
P10-056A	Wheel adapter		
P10-057	Front arm bracket		
P10-058	Chassis reinforcement bracket		
P10-059	Rear axle protection cover		
P10-063	Pinion gear		
P10-075	ESC mount		

05-02**ELECTRONIC DEVICES**

Part#	Name	Part#	Name
P10-066A	Head light assembly	P10-071B	Brushless motor
P10-067A	Roof light assembly	P10-072	Electronic speed controller(ESC)
P10-068A	Tail light assembly	P10-073	Receiver
P10-069	Steering servo	P10-3032	Transmitter
P10-082	Light board		

05-03**SCREW TYPE**

Part#	Name
M01-001	Hexagon socket head cap tapping screw (ø2.6×6mm HB)
M01-002	Hexagon socket head cap tapping screw (ø2.6×8mm HB)
M01-003	Hexagon socket head cap tapping screw (ø2.6×10mm HB)
M01-004	Hexagon socket head cap tapping screw (ø2.6×12mm HB)
M01-005	Hexagon socket head cap tapping screw (ø2.6×15mm HB)
M01-006	Hexagon socket head cap tapping screw (ø2.6×20mm HB)
M01-007	Hexagon socket head cap machine screw (ø2×6mm HM)
M01-011	Hexagon socket countersunk head tapping screw (ø2.6×6mm KB)
M01-012	Hexagon socket countersunk head tapping screw (ø2.6×8mm KB)
M01-013	Hexagon socket countersunk head tapping screw (ø2.6×15mm KB)
M01-014	Hexagon socket countersunk head tapping screw (ø2.5×8mm KM)
M01-016	Hexagonal flat round head self tapping screw (ø2.6×6mm TB)
M01-017	Hexagonal flat round head self tapping screw (ø2.6×8mm TB)
M01-019	Hexagon socket button head machine screw (ø2.5×12mm TM)
M01-020	Hexagon socket button head machine screw (ø2.5×15mm TM)
M01-021	Hexagon socket button head machine screw (ø3×12mm TM)
M01-023	Hexagon socket button head machine screw (ø3×18mm TM)
M01-024	Hexagon socket button head machine screw (ø3×20mm TM)
M01-027	Hex socket button head partial thread self-tapping screw (ø3×43mm)
M01-028	Hex socket round head machine screw (ø5×25mm PM)
M01-029	Hex socket long cylindrical end set screw (ø4×12mm)
M01-030	Set screw (ø3×4mm)
M01-033	Hexagon socket button head machine screw (ø2.5×18mm TM)
M01-060	Hexagon socket countersunk head tapping screw (ø2.5×10mm KM)
M01-061	Hexagon socket button head machine screw (ø3×10mm TM)
M01-062	Hexagon socket head cap machine screw (ø3×7mm HM)
UCX24-S005	Hex socket round head machine screw (ø2.0×6mm PM)
UCX24-S013	M2.5 Hex flanged nylon lock nut
M02-002	M5 Hex flanged lock nut
M03-001	Ball bearing (ø5×ø9×3mm)
M03-002	Ball bearing (ø6×ø10×3mm)
M03-003	Ball bearing (ø8×ø12×3.5mm)
M03-004	Ball bearing (ø10×ø15×4mm)
M03-006	Ball bearing (ø15×ø21×4mm)
M05-004	Differential cup
M05-022	Base plate
M05-023	Decorative drive rod
M05-032	Hollow ball (ø6.8×9×ø3mm)
M05-033	Hollow ball (ø5.8×6.8×ø3.1mm)
M05-034	Hollow ball (ø5.8×6.8×ø2.5mm)
M06-004	Pin (ø2.5×10mm)
M06-008	Front shock absorber pin(ø3×38.5mm)
M06-009	Front lower suspension arm pin(ø3×75mm)
M06-019	Pin (ø2.5×11mm)



06 - TROUBLESHOOTING

PROBLEM	POSSIBLE REASON	SOLUTION
Vehicle Not Running	Model battery low or damaged.	Install Fully Charged Battery.
	ESC wires or motor worn or broken.	Check Status, Reconnect and Insulate.
	ESC overheating triggers high-temperature protection.	Stop Driving, ESC or Motor Must Cool.
	Motor damaged.	Replace New Unit.
	ESC or receiver damaged.	Replace New Unit.
	Wheels or drive shaft entangled with debris.	Check Components, Clear Debris.
	Vehicle out of control range.	Operate Vehicle Within Transmitter Control Range.
Short Run Time, Poor Performance	Battery damaged or not fully charged.	Check Status, Replace or Charge.
	Motor dirty or damaged.	Clean, Check Condition or Replace.
	Terrain resistance causes excessive power consumption.	Play on Other Terrain.
	Drive system dirty or damaged.	Clean, Check Condition or Replace.
Limited Steering Angle	Steering travel rate on transmitter set incorrectly.	Adjust steering travel rate, refer to Section 04-04-04.
	Steering components damaged.	Check components and replace.
	Transmitter steering wheel not centered.	Calibrate steering wheel, refer to Section 04-04-03.
Transmitter Indicator Not Lit, or Unable to Control Vehicle	Transmitter battery low or installed incorrectly.	Replace new battery, refer to Section 03-02.
	Receiver wire loose or connected incorrectly.	Reconnect signal wire on ESC to receiver.
	Transmitter and receiver paired incorrectly.	Re-pair, refer to Section 04-02-02.
	Transmitter damaged.	Replace new unit.
Steering/Throttle Intermittent Operation	ESC overheating causes shutdown.	Stop driving, ESC or motor must cool.
	Transmitter and receiver paired incorrectly.	Check for interference sources, or re-pair.
Vehicle Moves Left/Right Unsteadily	Servo not set correctly.	Adjust servo setup.
	Steering components damaged.	Check and replace components.
	Drive system dirty or damaged.	Clean, check or replace.
Steering/Throttle Operation Reversed	CH1/CH2 set opposite on transmitter.	Reset, refer to Section 04-04-06.
	Check ESC-to-motor wire connections are correct.	Disconnect and reconnect.
Speed Lower Than Nominal	Lower speed selected on throttle limit switch.	Reset, refer to Section 04-04-09.
	Pinion gear stuck on motor mount.	Remove motor mount to adjust pinion gear.
Long Frequency Matching Time	Signal interference.	Restart vehicle and transmitter.
Operation Delay	Possible obstacles or interference.	Remove or avoid obstacles or interference.
Vehicle Automatically Moves Forward (Backward) or Makes "en..." Sound	Transmitter issue.	Restart transmitter, or adjust throttle neutral position, refer to Section 04-04-10.



07 - EXPLOSION VIEW

Remark: Including Section 07-01 to 07-13.

Refer to Page 33 for detail.



07 - EXPLOSION VIEW

Remark: Including Section 07-01 to 07-13.

07-01

BODY ASSEMBLY (The left and right installation is the same)



M01-012
×12pcs



P10-021
×12pcs

